

TEENS AND ECONOMIC ABUSE

What is **ECONOMIC ABUSE?**

Economic abuse is a deliberate pattern of control in which an individual interferes with their partner's ability to acquire, use, and maintain economic resources. Economic abuse looks like:

- Exploitation
- Control
- Sabotage

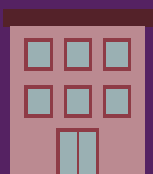
2/3

of surveyed youth experienced some form of economic abuse from their dating partner*



SCHOOL INTERFERENCE

Does your partner pressure you to skip class, to not study, to drop extracurriculars, or to change post-graduation plans?



WORK INTERFERENCE

Does your partner pressure you to quit your job, to work less hours, to call off work, to not work at all, or to be available to them while at work?



FINANCIAL CONTROL

Does your partner pressure you to give them your money, to allow them to manage your money, or to spend money on them when you do not want to?

BE AWARE OF THE SIGNS

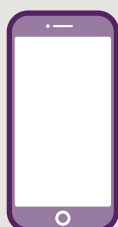
Your partner may:

- **Control** the money
- **Put pressure** on you to quit or keep a job
- **Limit** the places you can work
- **Limit** the places you can go

Your partner's actions cause instability, fear, and economic insecurity. These abusive tactics create obstacles to your freedom and may alter your future. Teen relationship abuse can lead to domestic violence where power and control impact living together, marriage or children.



**Scan For
More
Resources**
loveisrespect.org



Text:
LOVEIS
to **22522**