

COVID-19 GUIDANCE & RESOURCES

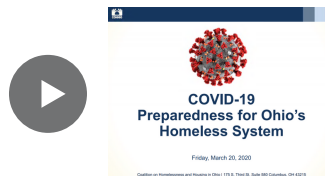


The Coalition on Homelessness and Housing in Ohio has compiled the following list of guidance and resources for homelessness services systems and providers about how to protect their staff, clients, and volunteers. We will vet and add additional resources as they become available.

GENERAL RESOURCES

COVID-19 PREPAREDNESS FOR OHIO'S HOMELESS SYSTEM (COHHIO)

In this webinar, COHHIO reviews key guidance from HUD, CDC, and others related to planning for and responding to the Coronavirus Disease 2019 (COVID-19) in homeless systems and projects.



THE CENTERS FOR DISEASE CONTROL (CDC)

Interim Guidance for Homeless Service Providers to Plan and Respond to Coronavirus Disease 2019 (COVID-19) (March 22, 2020) assists homeless service providers in planning for and responding to COVID-19. The Centers for Disease Control and Prevention (CDC) will update this interim guidance as needed and as additional information becomes available.

U.S. DEPARTMENT OF HOUSING AND URBAN DEVELOPMENT (HUD)

In the webinar titled "Infectious Disease and Provider Preparedness," HUD highlights guidance issued by federal agencies to support partnerships and systems serving households experiencing homelessness. Its goal is to improve partnership among public health authorities, homeless service systems, and other local partners.

U.S. INTERAGENCY COUNCIL ON HOMELESSNESS (USICH)

The USICH COVID-19 Toolkit (March 19, 2020) puts forth guidance to help systems work with their local governments and public health systems to prepare for and mitigate COVID-19 disease outbreaks among persons experiencing homelessness.

NATIONAL ALLIANCE TO END HOMELESSNESS (NAEH)

The NAEH Coronavirus and Homelessness post (updated daily) provides resources and helpful guidance from federal and government sources, as well as state and local partners.

DOUBLE JEOPARDY: THE CORONAVIRUS & HOMELESSNESS IN OHIO (COHHIO)



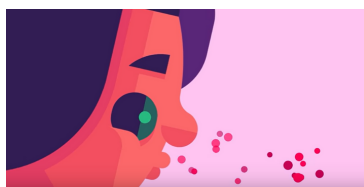
Double Jeopardy (March 2020), a report prepared by Barbara Poppe and Associates documents a critical lack of guidance, resources, and capacity to meet the needs of Ohioans who are experiencing homelessness and are at risk of contracting COVID-19.

COVID-19 GUIDANCE & RESOURCES

GENERAL RESOURCES: COVID-19 VIDEOS

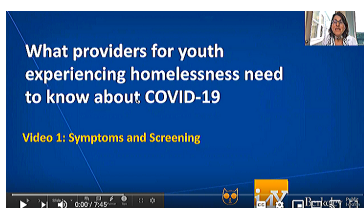
THE CORONAVIRUS EXPLAINED & WHAT YOU SHOULD DO - VIDEO (KURZGESAGT)

This 8-minute video explains what the Coronavirus is, what you should do, and how to avoid the spread.

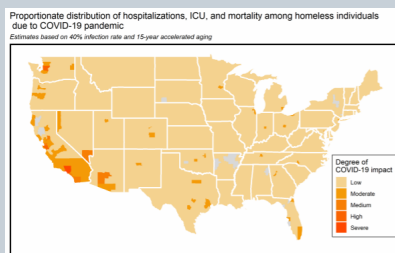


WHAT PROVIDERS FOR YOUTH EXPERIENCING HOMELESSNESS NEED TO KNOW ABOUT COVID-19 - VIDEO (UC BERKELEY)

This 8 minute video explains symptoms and screening procedures for providers serving youth experiencing homelessness. This information is applicable for all service providers.



POTENTIAL MORTALITY AND HOSPITALIZATION COSTS ASSOCIATED WITH COVID-19 INFECTION AMONG THE HOMELESS POPULATION



"Estimated Emergency and Observational/Quarantine Bed Need for the US Homeless Population Related to COVID-19 Exposure by County; Projected Hospitalizations, Intensive Care Units and Mortality." aims to establish the potential mortality and hospitalization costs associated with COVID-19 infection among the homeless population in the United States. The authors' analysis suggest that the total estimated cost to meet the nation's emergency and observational/quarantine shelter bed need is approximately \$11.5 billion for the current year, and project that homeless individuals infected by COVID-19 would be twice as likely to be hospitalized, two to four times as likely to require critical care, and two to three times as likely to die than the general population.

Authors: *Dennis Culhane, Daniel Treglia and Ken Steif, University of Pennsylvania Randall Kuhn, University of California Los Angeles, Thomas Byrne, Boston University.*

March 2020

COVID-19 GUIDANCE & RESOURCES

STREET OUTREACH

THE CENTERS FOR DISEASE CONTROL (CDC)

[Interim Guidance for Responding to Coronavirus Disease 2019 \(COVID-19\) among People Experiencing Unsheltered Homelessness](#) (March 22, 2020) assists homeless service providers in planning for and responding to COVID-19. The Centers for Disease Control and Prevention (CDC) will update this interim guidance as needed and as additional information becomes available.

U.S. DEPARTMENT OF HOUSING AND URBAN DEVELOPMENT (HUD)

[Protecting Health and Well-being of People in Encampments During an Infectious Disease Outbreak](#) (March 26, 2020) This document assists provider with safer options and meaningful choices for people who are unsheltered.

[Preventing & Managing the Spread of Infectious Disease within Encampments](#) (March 2020) outlines the steps CoCs must consider when working with local stakeholders to develop and implement sanitation guidelines. Specifically, it assists CoC Boards, Collaborative Applicants, and homeless crisis response service providers in developing and implementing outreach strategies, and provides practical information and precautions for street outreach workers to assist in maintaining safe environments within encampments to prevent the spread of infectious disease.

EMERGENCY SHELTER & TRANSITIONAL HOUSING

OHIO DEPARTMENT OF HEALTH (ODH)

The Ohio Department of Health (ODH) [Homeless Shelters COVID-19 Checklist](#) (March 16, 2020) checklist is recommended for use by homeless shelters to ensure staff, clients, and volunteers are protected against COVID-19.

THE CENTERS FOR DISEASE CONTROL (CDC)

[Non-Congregate Approaches To Sheltering For Covid-19 Homeless Responses \(March 26, 2020\)](#) This document is for Continuums of Care considering non-congregate approaches to sheltering people who are homeless that are symptomatic or in high risk categories, such as seniors or people with chronic illness, should consider the following guidance is essential in design, resource investment and

[Resources to Support People Experiencing Homelessness](#) (March 22, 2020) is a guidance document prepared by the CDC to help shelters plan, prepare and respond to COVID-19.

U.S. DEPARTMENT OF HOUSING AND URBAN DEVELOPMENT (HUD)

[Preventing & Managing the Spread of Infectious Disease Within Shelters](#) (March 2020) provides guidance on developing and implementing sanitation guidelines within the emergency shelter system to prevent and address the spread of infectious disease. This document is for use by CoC Boards, Collaborative Applicants, and homeless crisis response providers such as shelter staff. Information can be adapted and incorporated into local written standards, contracts, daily standard operating procedures, and monitoring protocols.

COVID-19 GUIDANCE & RESOURCES

EMERGENCY SHELTER & TRANSITIONAL HOUSING (CONTNUED)

U.S. DEPARTMENT OF HOUSING AND URBAN DEVELOPMENT (HUD)

Non-congregate approaches to sheltering for covid-19 homeless response

Coc's considering non-congregate approaches to sheltering people who are homeless should consider the following guidance when designing local approaches.

U.S. DEPARTMENT OF HOUSING AND URBAN DEVELOPMENT (HUD)

HUD also released the following screening tool for emergency shelters. In this guidance document, learn how to screen clients entering shelter and what to do if you suspect someone may have COVID-19.

How to screen clients upon entry to shelter or opportunity centers:

1. Take the client's temperature using a temporal thermometer.

- 1. Any temperature greater than 100.4 is considered a fever.
- If a client has a temperature **above 100.0 but less than 100.4** please have them sit away from others, and retest in a few minutes.
- If a client has temperature between 99.5 – 100.0, please note where their bunk is, and recheck them in two hours.
- Temperatures below 99.5 may continue into the shelter using normal procedures.

2. Ask the client "Do you have a new, or worsening cough today?"

If the client has a fever AND answers yes to the above question: OR if the client a just a fever 101.0 or above:

- a. Place a mask on the client: this is a priority.
- b. Take them to an available space in the isolation area
- d. Tell the client:
 1. Do not to leave their room/the isolation area except to use the restroom or smoke **outside** (not in P4S).
 2. If they leave their room/isolation area they should wear a mask.
 3. Staff will bring them breakfast and check on them in the morning.
- e. If HGMPLS, notify Healthcare for the Homeless nurse is they are onsite.
- f. Notify
- g. Make sure it is communicated that there is a client in isolation during shift summary

For any client with severe symptoms call 911 and alert the EMT's to the possible COVID 19 infection.

Severe symptoms include:

- Difficulty breathing: inability to catch your breath or unable to talk
- Bluish lips or face
- Difficult to arouse

How to use a temporal thermometer:

These thermometers use an infrared scanner to measure the temperature of the temporal artery in the forehead.

Temperature screeners only, please wear gloves, a surgical mask, and eye protection.

To use thermometer:

1. Turn on the thermometer.
2. Gently sweep the thermometer across the client's forehead.
3. Remove the thermometer and read the number (>100.4 is a fever)
4. Clean with an alcohol wipe (or isopropyl alcohol on a cotton swab) between each clients' use. You can reuse the same swab as long as it remains wet.

PERMANENT SUPPORTIVE HOUSING & TRANSITIONAL HOUSING

CORPORATION FOR SUPPORTIVE HOUSING (CSH)

COVID-19 Guidance for Supportive Housing Providers (March 20, 2020) provides guidance and considerations to help supportive housing providers during the COVID-19 outbreak.

What Supportive Housing Providers Need to Know (March, 11, 2020) pulls together information from a variety of sources, considering the material from the vantage point of supportive housing providers, to help your agency best support your residents, staff and community.

COMMUNITY CASE MANAGEMENT

CORPORATION FOR SUPPORTIVE HOUSING (CSH)

COVID-19 Guidance for Supportive Housing Providers (March 20, 2020) provides guidance and considerations to help supportive housing providers during the COVID-19 outbreak.

PATHWAYS TO HOUSING D.C.

Client Visit / Phone Script Guidelines (March 17, 2020) was created by Pathways to Housing D.C. to guide staff in providing consumers with consistent and accurate information to preserve their health and safety.

COVID-19 GUIDANCE & RESOURCES

CHILDREN & YOUTH EXPERIENCING HOMELESSNESS

LEGAL AID SOCIETY OF COLUMBUS

Rights of Homeless Students During COVID-19 (March 19, 2020) informs parents and advocates of school-aged children experiencing homelessness of their rights to access their education and receive supports from their school to ensure stability is maintained during school closures.

U.S. INTERAGENCY COUNCIL ON HOMELESSNESS (USICH)

Supporting Children and Youth Experiencing Homelessness during the COVID-19 Outbreak: Questions to Consider (March 16, 2020) addresses the unique needs of students experiencing homelessness and provides guidance for communities on how to support children and youth experiencing homelessness during the COVID-19 outbreak.

NATIONAL NETWORK FOR YOUTH (NN4Y)

COVID-19 Resources for Youth Homelessness Providers is a resource for community-based providers offering strategies to improve services for homeless youth during the COVID-19 crisis.

DOMESTIC VIOLENCE

OHIO DOMESTIC VIOLENCE NETWORK (ODVN)

Interim Guidance on COVID-19 for Member Domestic Violence Programs (March 22, 2020) addresses the unique needs of domestic violence victims who may be symptomatic and have no other safe housing option for isolation and physical distancing until recovered. Guidance focuses on protective actions that can be taken to reduce community transmission and properly assist individuals encountered.

OHIO DEPARTMENT OF HEALTH (ODH)

Staying Safe at Home for Victims of Domestic Violence is a resource to help ensure the well-being of individuals whose residences are unsafe, or become unsafe, such as victims of domestic violence. The guidance also documents the way COVID-19 could uniquely impact intimate partner violence survivors.

COVID-19 GUIDANCE & RESOURCES

STAFFING & WORKFORCE

THE CENTERS FOR DISEASE CONTROL (CDC)

[Stress and Coping](#) (March 23, 2020) provides information regarding the increase in fear and anxiety stemming from the COVID-19 outbreak.

[Interim Guidance for Businesses and Employers to Plan and Respond to Coronavirus Disease](#) (March 21, 2020) provides guidance to help prevent workplace exposures to COVID-19 in non-healthcare settings. This guidance also provides planning considerations to prevent spread of COVID-19.

[Environmental Cleaning and Disinfection Recommendations](#) (March 6, 2020) provides recommendations for the cleaning and disinfection of rooms, areas, or workspaces of those suspected or with confirmed cases of COVID-19.

TECH SAFETY

[How to Operate as Remote Workplace During a Public Health Crisis](#) is a beneficial tool for organizations needing to implement technologies allowing staff to work remotely. During a public health crisis, public health officials often recommend the practice of social distancing to slow the spread of infection. Technology such as remote access to files, video calls, and instant messaging may be used to maintain program operations while allowing staff and volunteers to work remotely.

NEW/EXISTING FUNDING OPPORTUNITIES

STATEWIDE

COHHIO
[Pandemic Emergency Fund](#)

Ohio Housing Finance Agency (OHFA)
[Rental Assistance and Emergency Homelessness Services](#)

Corporation for Supportive Housing (CSH)
[Community Transition Program \(CTP\) Housing Subsidies](#)

NATIONAL

FEMA
[Fact Sheet Coronavirus \(COVID-19\) Pandemic: Eligible Emergency Protective Measures](#)

HUD
[Using Continuum of Care Program Funds](#)

[Using a Disaster Policy to Fund Infectious Disease Preparedness](#)

[Eligible ESG Costs for Infectious Disease Preparedness](#)

For questions regarding COVID-19 and homelessness, reach out to Douglas.Argue@cohhio.org.

For questions about the resources listed above reach out to JoshJohnson@cohhio.org